



SWIFT

Company Profile



COMPANY OVERVIEW

Operating within Zimbabwe for over 78 years, Swift Transport is a proudly Zimbabwean brand. It is a well-established national transport and logistics company specialising in local and international courier services and freight transport, distribution and logistics. Swift has a wide range of service offerings making it the go to company that can take care of all transport requirements.

Swift's main services include; Swift Courier Express, Swift Freight, Swift Full loads, Swift Mutakuri and SkyNet Worldwide Express. Swift is also the only local transport company that can boast having a truly nationwide network. It has 37 depots, nine satellite depots and seven convenience outlets situated throughout the country, guaranteeing delivery anywhere within 48 hours.



OUR HISTORY

Swift Transport Services was incorporated on the 16 March 1946 and started with two depots, one in Harare and one in Bulawayo. Over the years other transport operations were acquired, growing the fleet and increasing the depot saturation. Swift's roots from its inception over 77 years ago has been in all aspects of transport and logistics. The company has the ability to transport freight for all industries bringing together decades of experience and expertise in logistics, supply chain movement and freight storage and movement. Swift is locally owned, it has weathered many transitions, political and economic, as well as a global pandemic, it is a steadfast transporter. Swift is renowned throughout Zimbabwe and is a trusted and well respected brand.



OUR TEAMS

Swift employs over 800 staff nationwide

We believe in training staff, this is seen as an investment in our people and the company as a whole.

Driver Training

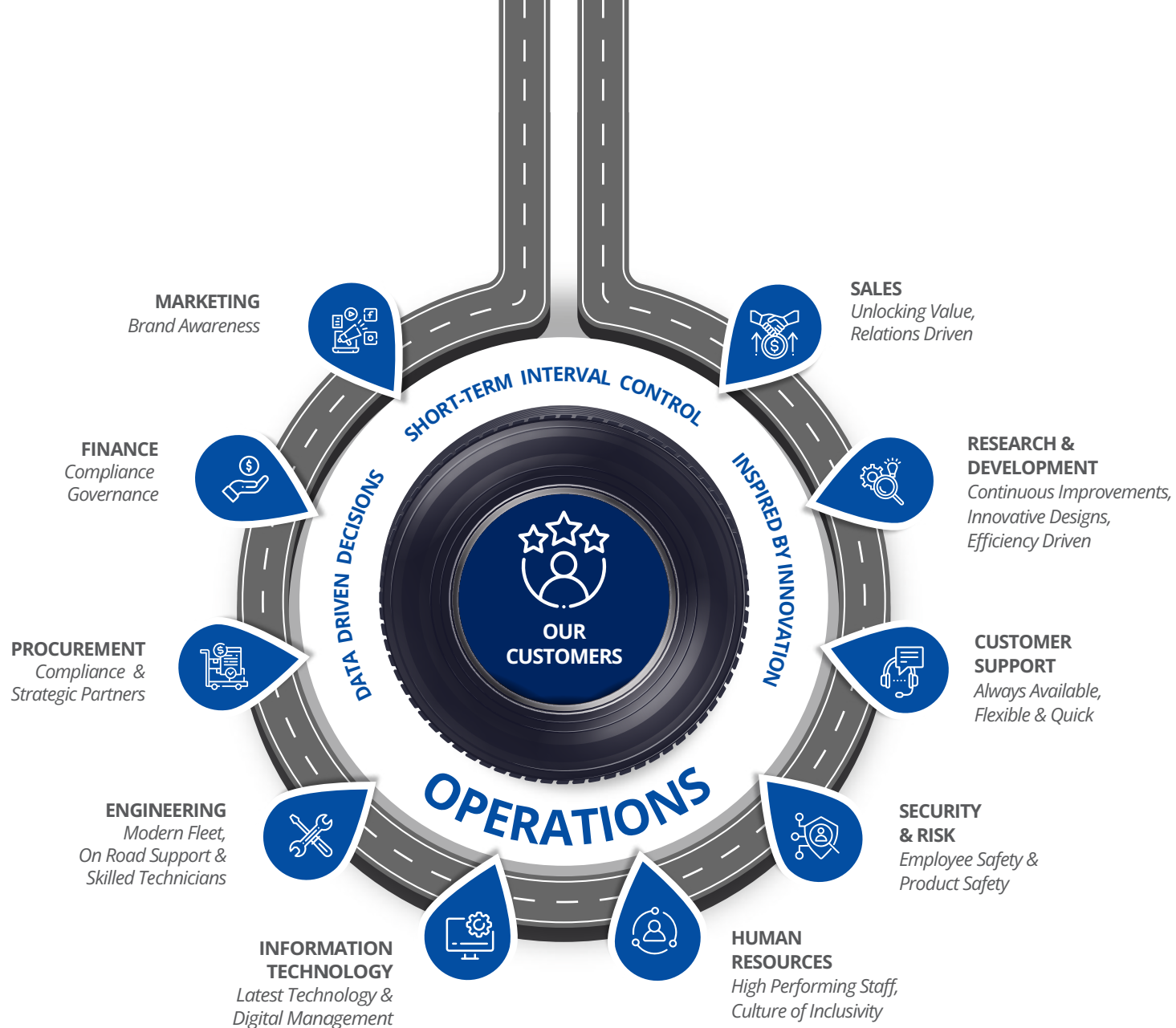
Unifreight has a dedicated driving school, the focus of which is to train all company drivers on all vehicles within the fleet. The School also offers an extensive defensive driving course and many refresher courses.

Staff Training

We pride ourselves on offering both internal and external staff training across all departments ensuring staff members have the knowledge and understanding to offer a great service.

Apprentices & graduates

Every year Swift transport enrolls both apprentices for the Engineering division and Graduates Management Trainees (GMTs) from tertiary institutions around the country to work in departments throughout the company. The GMT's are incorporated into the business where they gain practical experience in their given field.



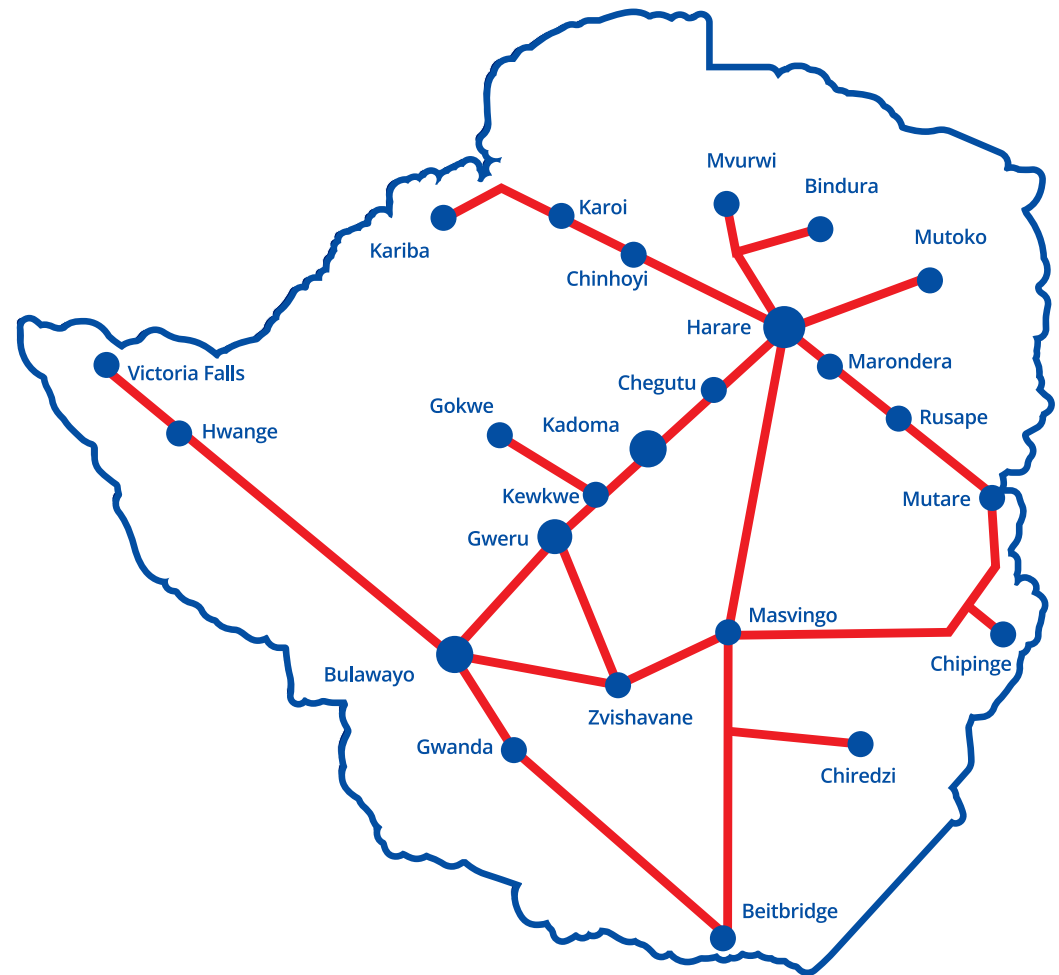
OUR LOCATIONS

Swift's depots are strategically situated throughout the country. Swift has one of the best run fleet of vehicles on the road, which can be attributed to the success of the company and how it is currently being managed. Swift transport has secured contracts from some of the biggest corporations operating in all industries in Zimbabwe through its great service offering and much sought after reliability, safety and security record. Swift is an innovative and dynamic company embracing the needs of all its customers across all industries, working to deliver a 'to door' service for both businesses and individuals alike.

OUR SCHEDULE

With over 200 vehicles servicing Zimbabwe and 300 trailers, we have daily routes to these locations; Harare, Bindura, Bulawayo, Chinhoyi, Chiredzi, Gweru, Hwange, Kadoma, Kariba, Kwekwe, Marondera, Masvingo, Mutare, Rusape and Victoria Falls.

Our other routes range from once to four times a week.

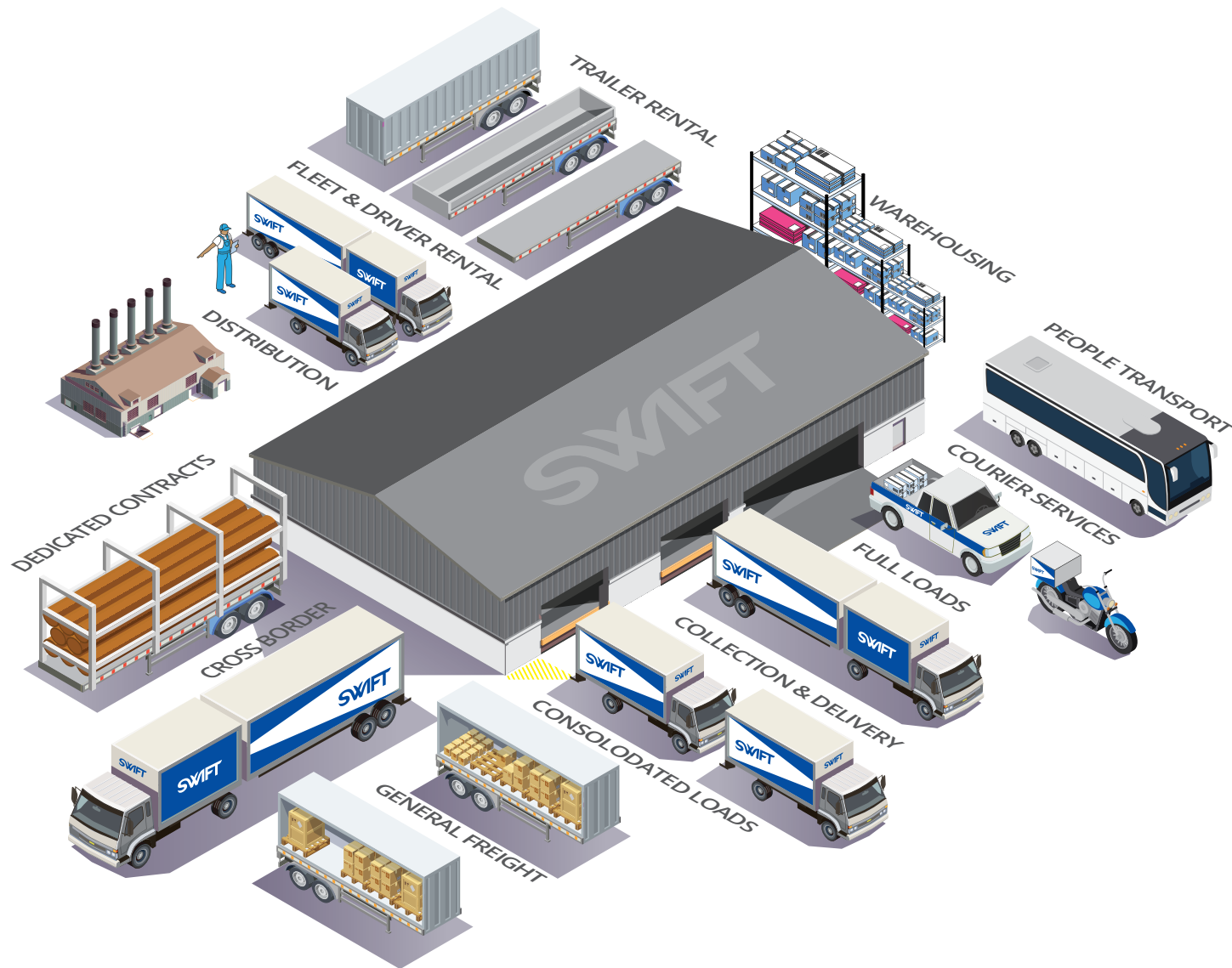


OUR SERVICES

Swift's depots are strategically situated throughout the country. Swift has one of the best run fleet of vehicles on the road, which can be attributed to the success of the company and how it is currently being managed. Swift transport has secured contracts from some of the biggest corporations operating in all industries in Zimbabwe through its great service offering and much sought after reliability, safety and security record. Swift is an innovative and dynamic company embracing the needs of all its customers across all industries, working to deliver a 'to door' service for both businesses and individuals alike

PRE-PAID PACKAGES

From 1Kg to 20Kg, our wide range of package options ensures that your items are delivered safely and securely, to any of our Depots Nationwide.



EXPRESS

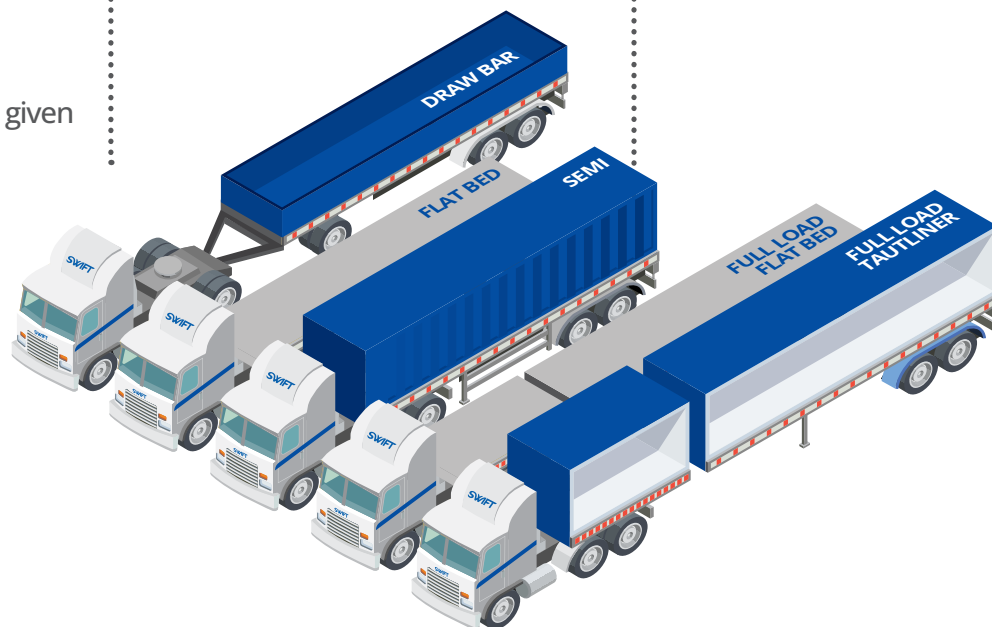
- Weight range: 21 – 100 Kgs
- Overnight to major destinations
- Guaranteed 48 hour delivery to other destinations
- Consignments delivered by 10am to a business address – within Municipal Areas in primary destinations
- Personal/Residential addresses are required to collect from the depot
- Perishable freight is always given priority and is an exception regardless of volume

FREIGHT

- Weight range: 101 Kgs – 6 tonnes
- Guaranteed 48 hour delivery to other destinations
- Delivery within 24 hours 80% of the time to major destinations (Harare, Bulawayo, Masvingo, Mutare, Kariba, Chiredzi, Gweru, Kwekwe)
- Consolidated loads accepted
- Variety of trailer options available

FULL LOADS

- Weight range: 6 tonnes to a maximum 34 tonnes
- Guaranteed 48 hour delivery to major destinations (Harare, Bulawayo, Masvingo, Mutare, Kariba, Chiredzi, Gweru, Kwekwe)
- Demurrage incurred after 48 hours



SKYNET

WORLDWIDE EXPRESS

The Partnership that Delivers

- Weight range: 0 – 30kilograms
- Service available on 7 continents and in 209 countries
- Parcel Express (Export and Import)
- Import Express (Collection from anywhere in the world)
- Airfreight (Export and Import)
- Customs Clearing (through a partnership)
- Domestic Courier service to door (Limited to special clients at premium rates in Harare)

OUR FLEET

With its inherently sound infrastructure, large complement of well-trained drivers, and backed by experienced management and employees, the Swift transport fleet is large, varied and can carry any load from 0.1Kgs up to and including 34 Tonnes.

Swift boasts on of the largest fleets of any other local transport company in Zimbabwe.

The Swift Trunking class includes heavy tractors for trunking and shunting of freight, moving loads between 6 and 34 tonnes; the C&D class (collection and delivery) comprises 4 and 7 tonne rigid and articulated vehicles, pick-ups and motorbikes. There are a multitude of different styles of trailers available to the entire fleet to move any load.

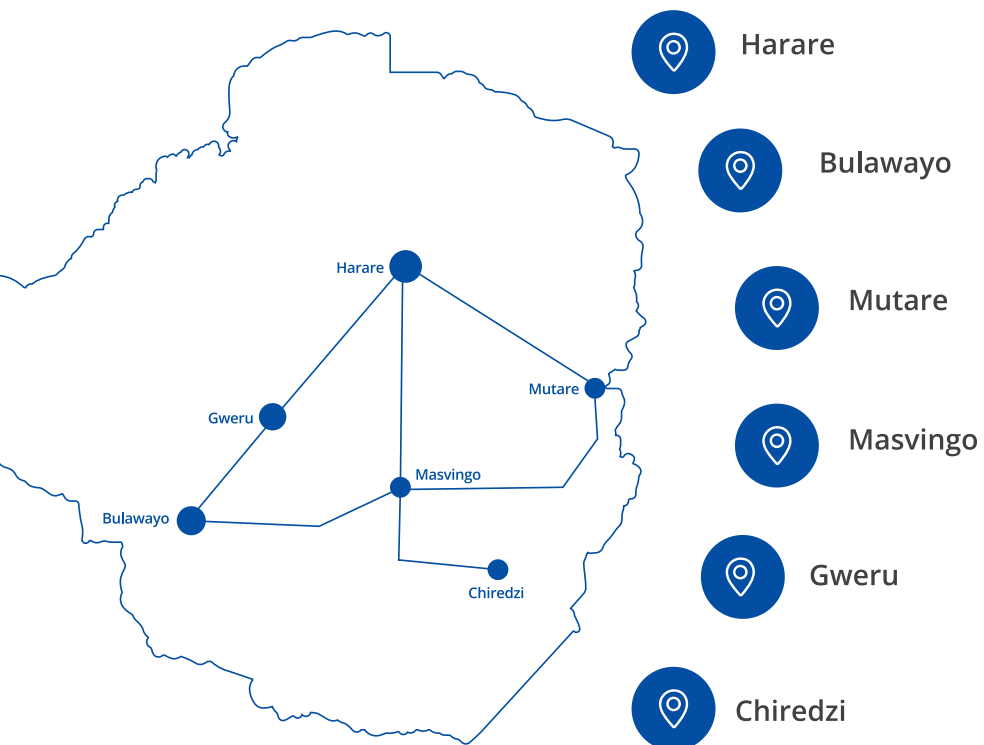
Our new FAW trucks are paired with a combination of AFRIT Taut-liner and AFRIT Super-link trailers designed to handle heavy loads and service the ever-growing Zimbabwean manufacturing and commercial sector. The state-of-the-art trailers have advanced safety features, ensuring that our cargo is secure during transit. We understand that our customers need to transport their goods in a safe and timely manner, which is why we have invested in a new fleet that is both reliable and efficient. We are confident that these new vehicles will further enhance our reputation for excellence in the industry. We also believe that our new fleet will help us meet the growing demand for transportation services in the market.

We also have some exciting new vehicles joining our fleet soon!



OUR MAINTENANCE

Engineering workshops are responsible for the maintenance of the entire Swift fleet. There are 6 workshops strategically situated in Swift depots countrywide. These workshops are on call 24 hours a day, seven days a week to ensure minimum down time should a breakdown occur. There are 80 qualified personnel including experienced mechanics and artisans who operate from these national workshops.



OUR FUTURE

Zimbabwe is advantageously situated within southern Africa and has good trading relationships with its neighboring countries. Freight movement is done mostly via the road networks as rail infrastructure in Africa is often not reliable. Swift transport will be looking at cross-border opportunities in the future, which has been requested by a few of its current customers. Having totally dominated and perfected the local distribution and transportation market, Swift transport's future will include taking its transport model further afield into Africa.

Swift Transport will also be supporting the local transport market with a new home delivery service currently being implemented. Swift Transport has confidence in the future, pride in its abilities, and is and is always ready and willing to deliver professional transport and related logistics services to meet the needs of both existing and prospective customers in Zimbabwe, and the region as a whole.

Convenience

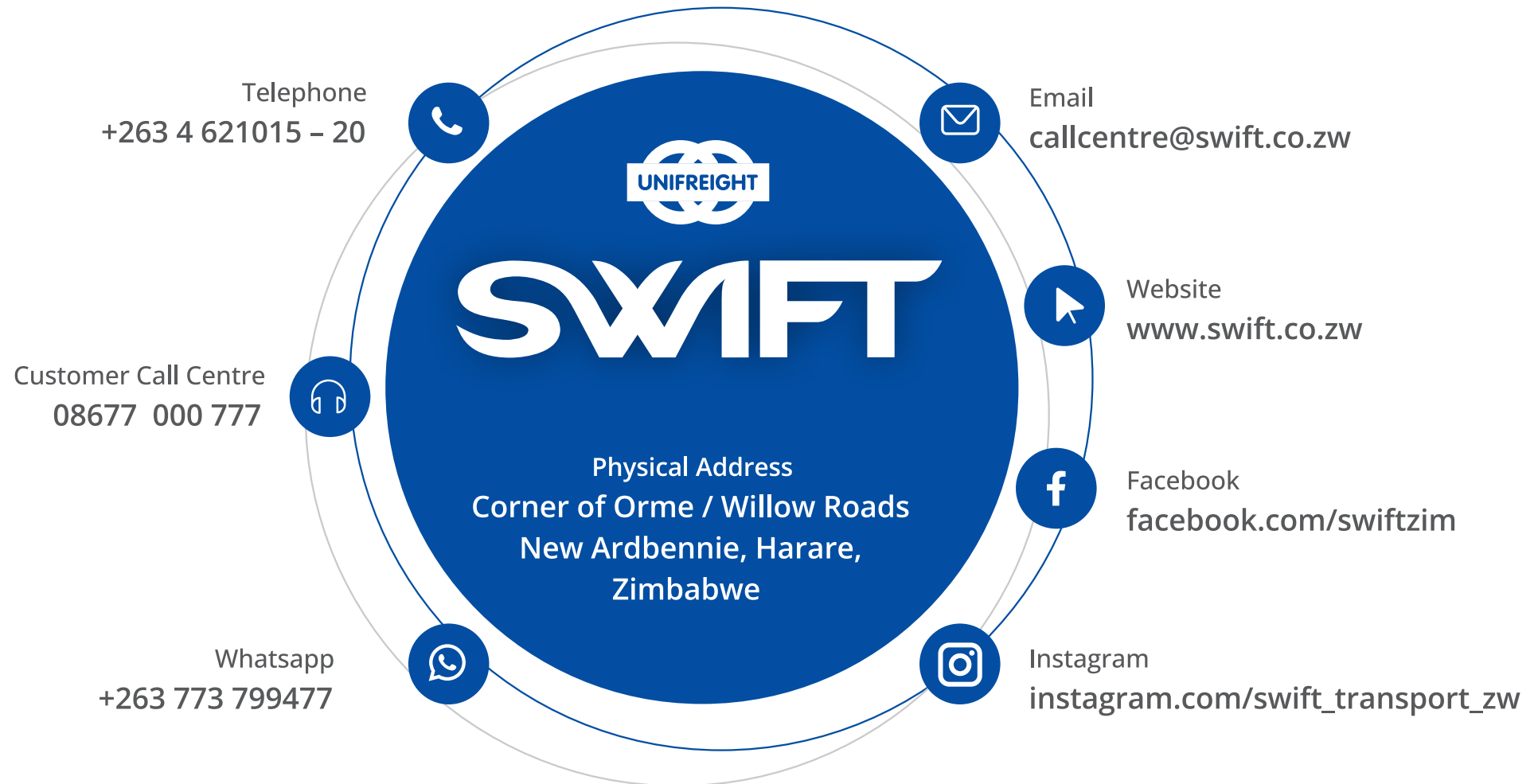
Swift over the last year has opened 5 'Convenience Outlets' in suburban locations around the capital city Harare so that customers have more access to all Swift's transport services.

Digital

Customers can also book and pay for collections and deliveries "to door" through the Swift website. This service was introduced during the pandemic and has grown to become a Home Delivery service.



Get in touch with us today



Moving What Matters